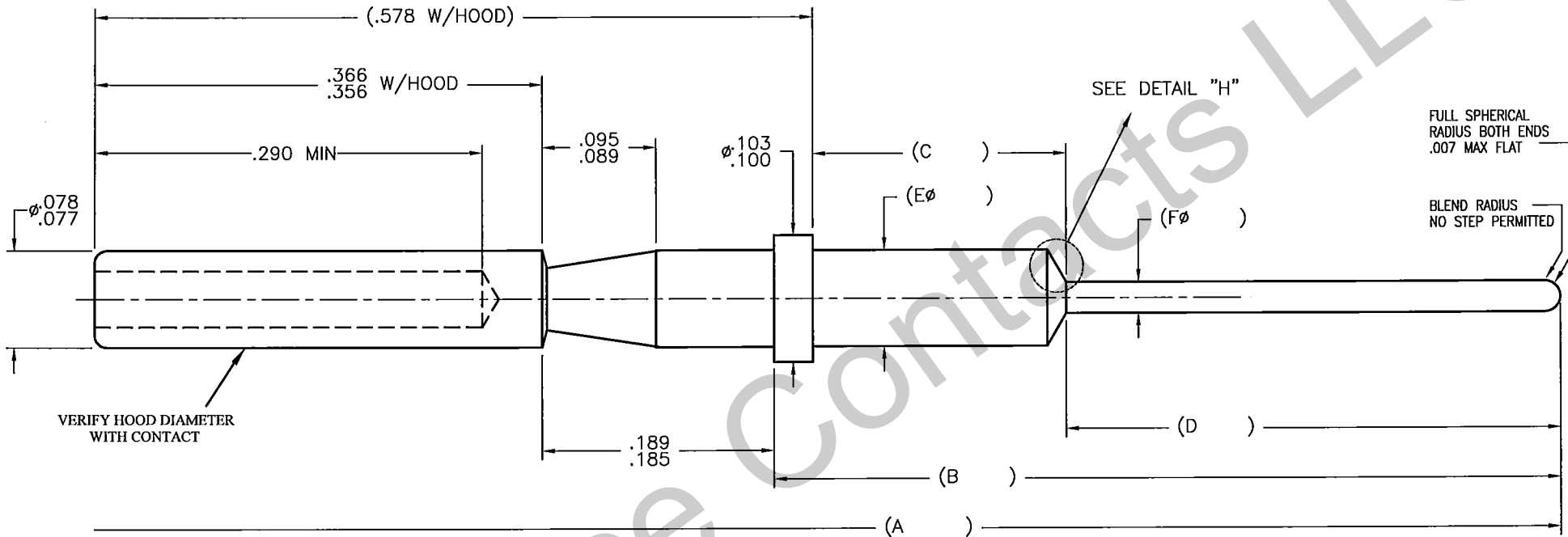


PART NUMBER	REV	A	B	C	D	ØE	ØF	DETAIL		COMMENT
								H	DIM	

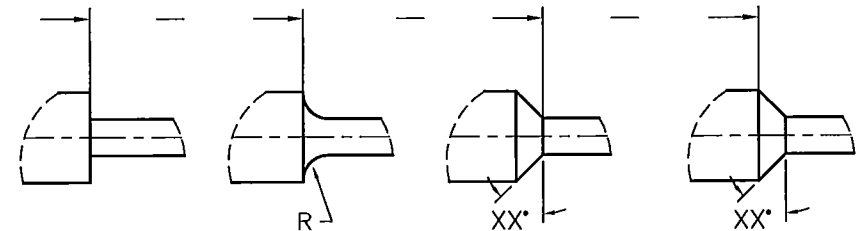
REVISIONS			
REV	DESCRIPTION	DATE	APPROVAL
N/C	RELEASED		



8. CONTACT MEETS OR EXCEEDS SPECIFICATION AND REQUIREMENTS OF MIL-C-39029/32-242 EXCEPT AS INDICATED HEREIN.
6. CONTACT SHALL MEET THE SOLDERABILITY REQUIREMENTS OF MIL-STD-202, METHOD 208
5. ALL DIAMETERS ON A COMMON CENTERLINE ARE TO HAVE A CIRCULAR RUNOUT OF .002 MAX.
4. DIMENSIONS SHOWN ARE AFTER PLATING.
3. FINISH: .000050 THICK MINIMUM GOLD PER MIL-G45204, TYPE II, GRADE C, CLASS 1  
OVER .000050-.000100 THICK SULFAMATE NICKEL PER QQ-N-290, CLASS 2,  
OVER .000015 THICK MINIMUM COPPER PER MIL-C-14550.

2. MATERIAL: A. SUITABLE COPPER ALLOY (LEADED NICKEL COPPER).  
B. C17300 BERYLLIUM COPPER TD04  
C. YOUR CHOICE

1. INTERPRET DRAWING PER ASME-14.5M - 1994.
- NOTES: UNLESS OTHERWISE SPECIFIED.



DETAIL "H1"      DETAIL "H2"      DETAIL "H3"      DETAIL "H4"

**Aerospace  
Contacts LLC**

THIS DOCUMENT IS ISSUED IN STRICT CONFIDENCE ON THE CONDITION THAT IT IS NOT TO BE USED AS THE BASIS FOR MANUFACTURING OR SALE, AND THAT IT IS NOT TO BE COPIED, REPRINTED OR DISCLOSED TO A THIRD PARTY EITHER WHOLLY OR IN PART WITHOUT THE WRITTEN CONSENT OF AEROSPACE CONTACTS, LLC.

REFERENCE: MIL-C-39029/32-242

DRAWN	SzL	01.01.09
CHECKED	K.B.	
APPROVED		

DIMENSIONS ARE IN INCHES  
TOLERANCES:  
DECIMALS: .XX = ±.005  
.XXX = ±.003  
ANGLES: ±1°

MATING CONTACT: MIL-C-39029/31

TYPE: CONTACT

**CONTACT #20 MASTER  
PIN/P.C.**

SCALE: 8:1      1 SHEET OF 1      PART NUMBER ACLLC