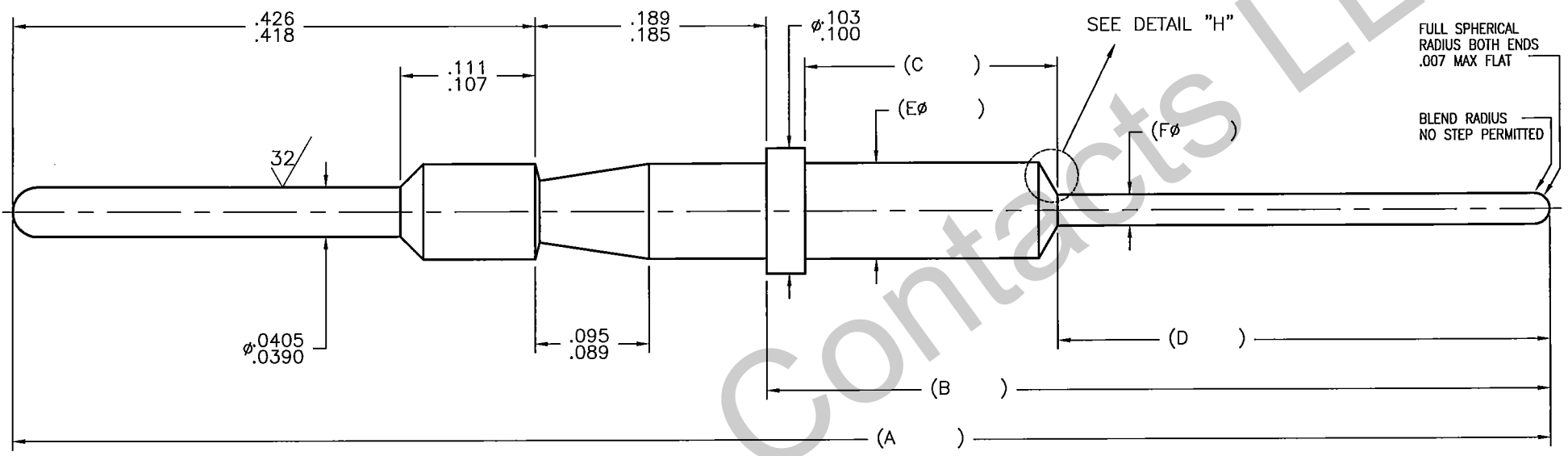
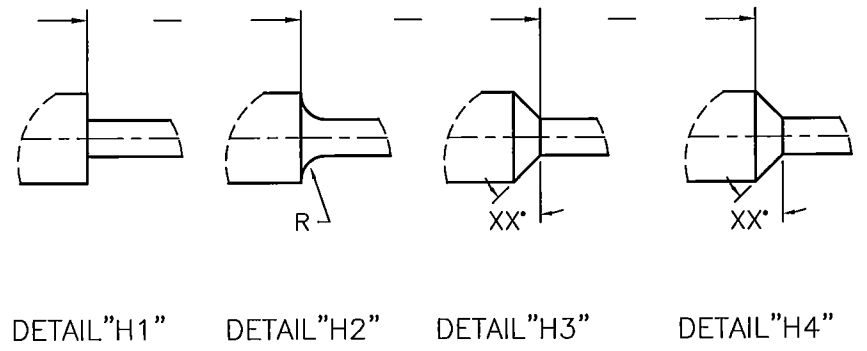


REVISIONS			
REV	DESCRIPTION	DATE	APPROVAL
N/C	RELEASED		

PART NUMBER	REV	A	B	C	D	ØE	ØF	DETAIL		COMMENT
								H	DIM	



- CONTACT MEETS OR EXCEEDS SPECIFICATION AND REQUIREMENTS OF MIL-C-39029/31-223 EXCEPT AS INDICATED HEREIN.
 - CONTACT SHALL MEET THE SOLDERABILITY REQUIREMENTS OF MIL-STD-202, METHOD 208
 - ALL DIAMETERS ON A COMMON CENTERLINE ARE TO HAVE A CIRCULAR RUNDOUT OF .002 MAX.
 - DIMENSIONS SHOWN ARE AFTER PLATING.
 - FINISH: .000050 THICK MINIMUM GOLD PER MIL-G45204, TYPE II, GRADE C, CLASS 1
OVER .000050-.000100 THICK SULFAMATE NICKEL PER QQ-N-290, CLASS 2,
OVER .000015 THICK MINIMUM COPPER PER MIL-C-14550.
- MATERIAL: A. SUITABLE COPPER ALLOY (LEADED NICKEL COPPER).
 B. BRASS PER ASTM B16 UNS C36000 H02.
 C. C17300 BERYLLIUM COPPER TD04
 D. YOUR CHOICE
- INTERPRET DRAWING PER ASME-14.5M - 1994.
- NOTES: UNLESS OTHERWISE SPECIFIED.



**Aerospace
Contacts LLC**

THIS DOCUMENT IS ISSUED IN STRICT CONFIDENCE ON THE CONDITION THAT IT IS NOT TO BE USED AS THE BASIS FOR MANUFACTURING OR SALE, AND THAT IT IS NOT TO BE COPIED, REPRINTED OR DISCLOSED TO A THIRD PARTY EITHER WHOLLY OR IN PART WITHOUT THE WRITTEN CONSENT OF AEROSPACE CONTACTS, LLC.

REFERENCE: MIL-C-39029/31-223			MATING CONTACT: MIL-C-39029/32		TYPE: CONTACT
DRAWN	SzL	01.01.09	DIMENSIONS ARE IN INCHES		
CHECKED	K.B.		TOLERANCES:		
APPROVED			DECIMALS: .XX = ±.005		
			ANGLES: ±1°		
			.XXX = ±.003		

CONTACT #20 MASTER PIN/P.C.		
SCALE: 8:1	1 SHEET OF 1	PART NUMBER ACLLC