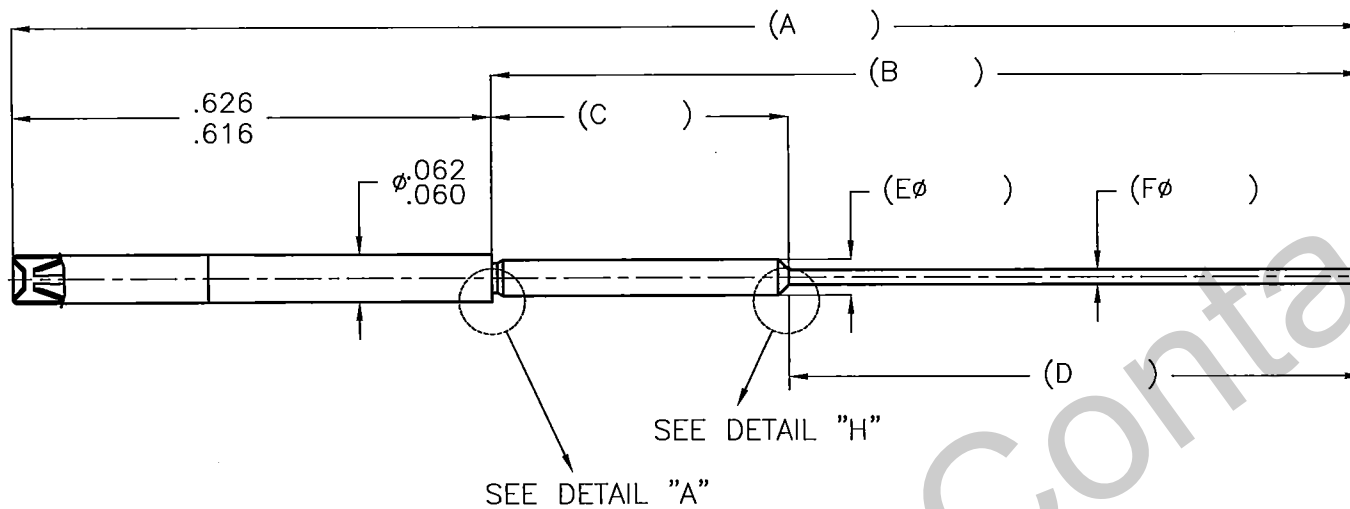


PART NUMBER	REV	A	B	C	D	ØE	ØF	DETAIL		COMMENT
								H	DIM	

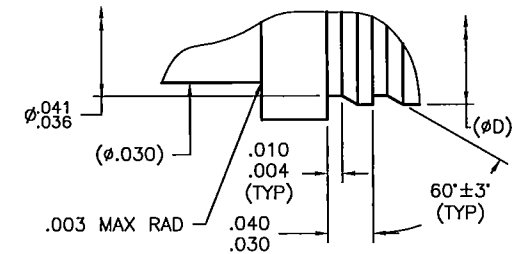
REVISIONS			
REV	DESCRIPTION	DATE	APPROVAL
N/C	RELEASED		



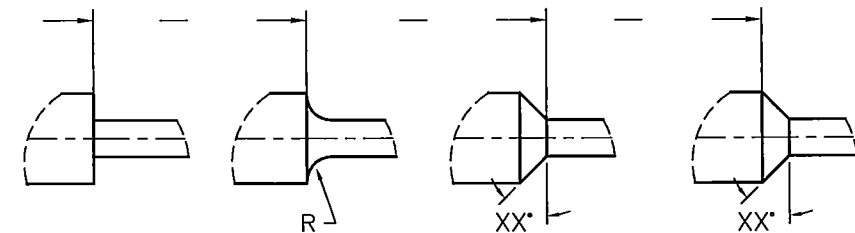
ENGAGEMENT & SEPARATION

	SEPARATION	ENGAGE.
MIN.	.7 OZ. 19.9 GRAM	N/A
MAX.	N/A	14.0 OZ. 397 GRAM
GAGE PIN	MS3197-22X1 $\phi .0296 / .0295$	MS3197-22Y1 $\phi .0305 / .0304$

DETAIL "A"



8. CONTACT MEETS OR EXCEEDS SPECIFICATION AND REQUIREMENTS OF MIL-C-39029/56-348, EXCEPT AS INDICATED HEREIN.
- △ IDENTIFICATION GROOVE  
A. INCLUDED  
B. NOT INCLUDED
6. CONTACT SHALL MEET THE SOLDERABILITY REQUIREMENTS OF MIL-STD-202, METHOD 208
5. ALL DIAMETERS ON A COMMON CENTERLINE ARE TO HAVE A CIRCULAR RUNDOUT OF .002 MAX.
4. DIMENSIONS SHOWN ARE AFTER PLATING.
3. FINISH: .000050 THICK MINIMUM GOLD PER MIL-G45204, TYPE II, GRADE C, CLASS 1  
OVER .000050-.000100 THICK SULFAMATE NICKEL PER QQ-N-290, CLASS 2,  
OVER .000015 THICK MINIMUM COPPER PER MIL-C-14550.
- △ MATERIAL: A. SUITABLE COPPER ALLOY (LEADED NICKEL COPPER).  
B. BeCu (WITH HEAT TREATMENT)  
C. YOUR CHOICE.
1. INTERPRET DRAWING PER ASME-14.5M - 1994.  
NOTES: UNLESS OTHERWISE SPECIFIED.



DETAIL "H1"    DETAIL "H2"    DETAIL "H3"    DETAIL "H4"

Aerospace  
Contacts LLC

THIS DOCUMENT IS ISSUED IN STRICT CONFIDENCE ON THE CONDITION THAT IT IS NOT TO BE USED AS THE BASIS FOR MANUFACTURING OR SALE, AND THAT IT IS NOT TO BE COPIED, REPRINTED OR DISCLOSED TO A THIRD PARTY EITHER WHOLLY OR IN PART WITHOUT THE WRITTEN CONSENT OF AEROSPACE CONTACTS, LLC.

REFERENCE: MIL-C-39029/56-348

MATING CONTACT: MIL-C-39029/58

TYPE: CONTACT

DRAWN	SZL	01.01.2009
CHECKED		
APPROVED		

DIMENSIONS ARE IN INCHES  
TOLERANCES:  
DECIMALS: .XX = ±.005  
              .XXX = ±.003  
ANGLES: ±1°

CONTACT #22 MASTER  
SOCKET/PC

CAGE:	1	SHEET OF 1	PART NUMBER	ACLLC
-------	---	------------	-------------	-------